

1

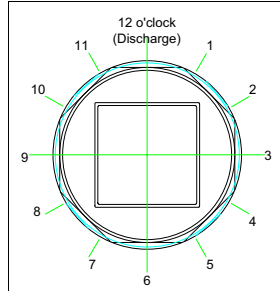
2

3

4

5

6



View looking down on the tank.
Treat this diagram like a clockface.
DISCHARGE is set at 12 o'clock.
Indicate the relative position for INLETS
CABLE DUCT and VENT if required.

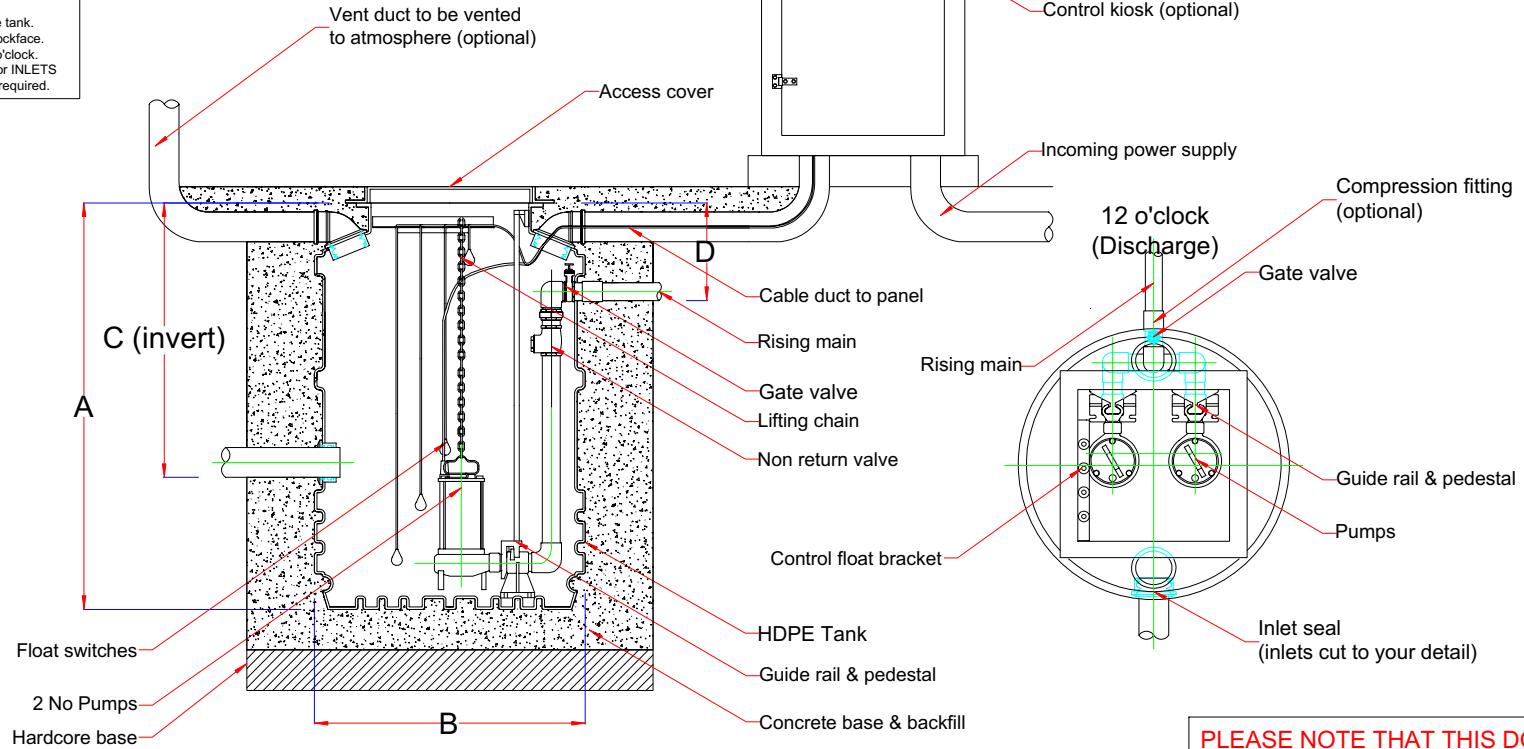
Fabrication Specifications				
ITEM	INDEX	DEPTH (mm)	DIA. (mm)	CLOCKFACE POSITION
Tank depth	A	1500	-	
Tank Ø	B	-	1000	
Inlet	C1		110	
Inlet	C2			
Inlet	C3			
Discharge	D		63	12
Cable duct			110	
Vent			110	

Kiosk (Single Door)		
Length (mm)	Width (mm)	Height (mm)
750	400	1250

Comments

Please Note - Inlet invert should be between 400 - 1015 mm.

Inlet seals and ducts can be supplied loose to be drilled and fitted on site



PLEASE NOTE THAT THIS DOCUMENT MUST BE READ IN CONJUNCTION WITH THE INSTALLATION & OPERATING GUIDELINES



REV	DETAIL	DATE	DRAWN

Tanks Direct Ltd
Channel House, Mart Road, Minehead, Somerset, TA24 5BJ
T: 01643 703358 F: 03332 223858
sales@tanks-direct.co.uk www.tanks-direct.co.uk

TITLE
Twin rigged Ø1000 x 1500 mm typical layout

CUSTOMER

DRAWING NO	DATE	DRAWN
111138	09/11/2018	gf
THIRD ANGLE PROJECTION		
		SCALE
		NOT TO SCALE
		SHEET
		1 of 1
TOLERANCE +/- 2%		REV 0