

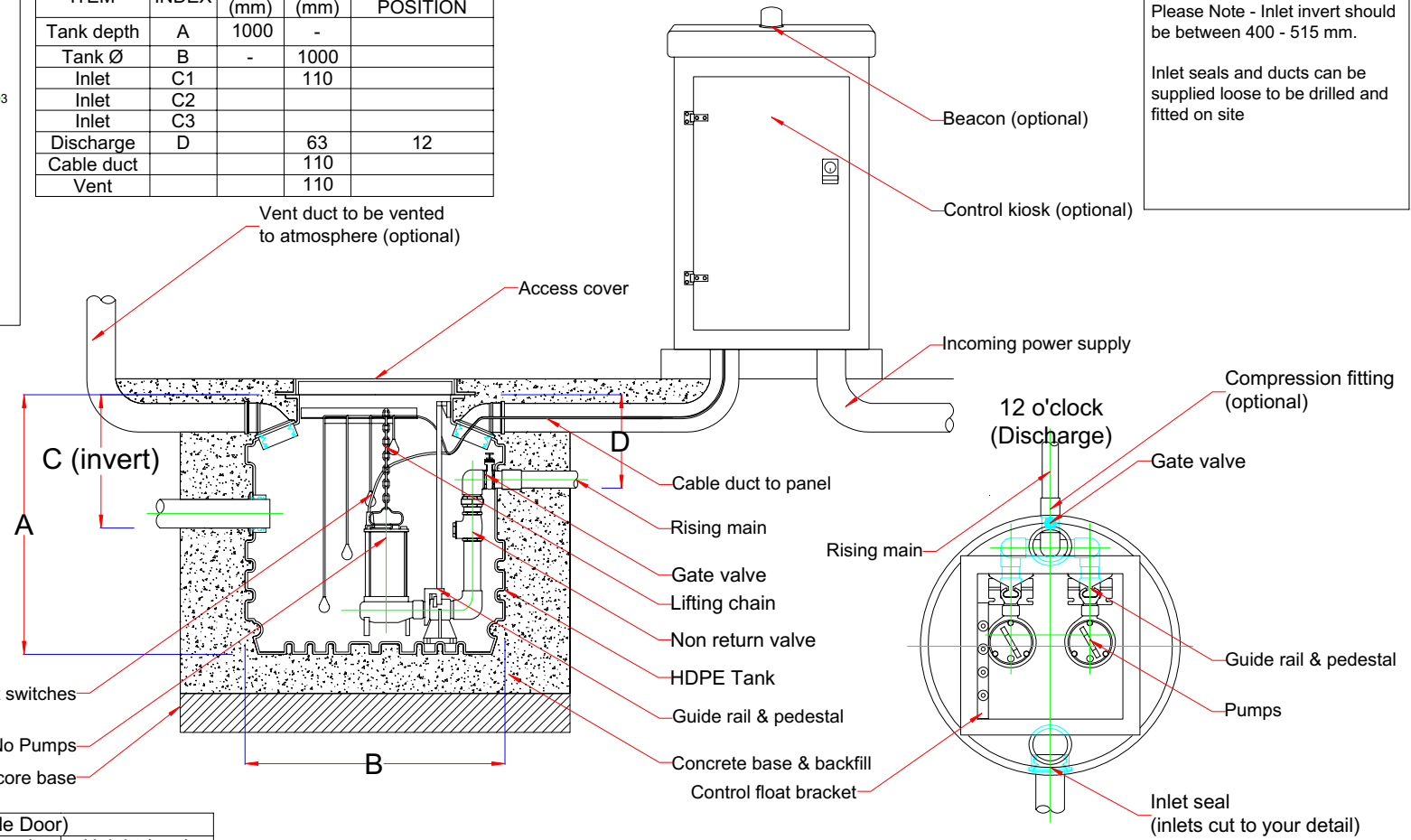
View looking down on the tank.  
Treat this diagram like a clockface.  
DISCHARGE is set at 12 o'clock.  
Indicate the relative position for INLETS  
CABLE DUCT and VENT if required.

Fabrication Specifications				
ITEM	INDEX	DEPTH (mm)	DIA. (mm)	CLOCKFACE POSITION
Tank depth	A	1000	-	
Tank Ø	B	-	1000	
Inlet	C1		110	
Inlet	C2			
Inlet	C3			
Discharge	D		63	12
Cable duct			110	
Vent			110	

**Comments**

Please Note - Inlet invert should be between 400 - 515 mm.

Inlet seals and ducts can be supplied loose to be drilled and fitted on site



Kiosk (Single Door)		
Length (mm)	Width (mm)	Height (mm)
750	400	1250

**PLEASE NOTE THAT THIS DOCUMENT MUST BE READ IN CONJUNCTION WITH THE INSTALLATION & OPERATING GUIDELINES**



REV	DETAIL	DATE	DRAWN

Tanks Direct Ltd  
Channel House, Mart Road, Minehead, Somerset, TA24 5BJ  
T: 01643 703358 F: 03332 223858  
sales@tanks-direct.co.uk www.tanks-direct.co.uk

**TITLE**  
Twin rigged Ø1000 x 1000 mm typical layout

**CUSTOMER**

DRAWING NO	DATE	DRAWN
111098	09/11/2018	gf
THIRD ANGLE PROJECTION		SCALE
		NOT TO SCALE
TOLERANCE +/- 2%		SHEET
		1 of 1
REV		0