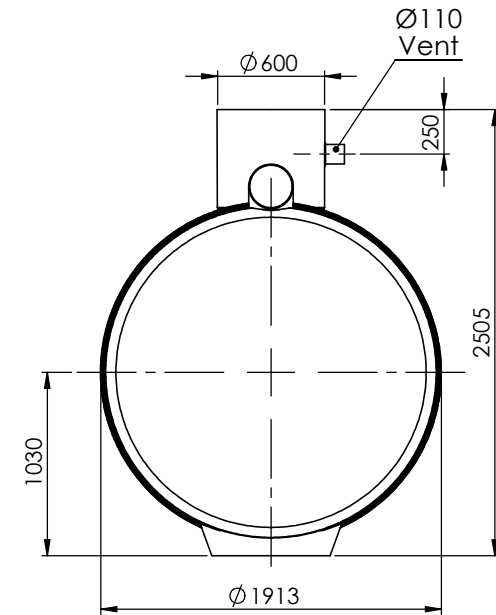
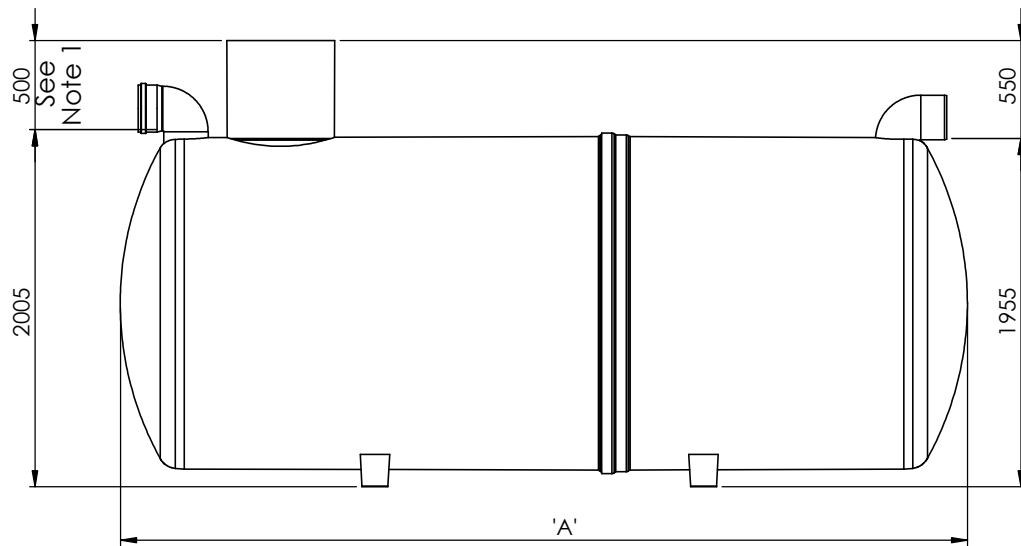


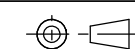
Notes: -

1. Units Can Be Provided With Extension Shafts In 0.5m Increments.
2. Standard Inlet/ Outlet Pipes Are PVCu Underground Drainage To BS5481, Other Pipe Sizes And Types Available.
3. It Is Essential That This Drawing Is Read In Conjunction With The Manual (Supplied With The Unit) Giving Installation Details. This Drawing Should Be Used For Dimensional Information Only.



Unit	Working Capacity	DIM 'A'	DIM 'B'	Inlet/ Outlet STD. Size	Approx Weight (kg)		Fall Across Unit
					Empty	Full	
W1/ 080	8000L	3230	900	250	413	8413	50
W1/ 100	10000L	3960		250	462	10462	50
W1/ 120	12000L	4755		300	520	12520	50

Please Check with Kingspan Environmental For The Latest Issue Of This Drawing

Issue	Date	Drawn by	Approved by	Description	Material : Various	Tolerance (unless stated) : n/a	Drawing : DS0852P	Page 1 of 1	
02	30/10/14	L.Steward		CC1179 - Re-drawn In Solidworks/ Change To New Ø1.8 Cases	Finish : n/a	Thickness : n/a			W1/080 - W1/120 Washdown & Silt Separators (1 Stage)
					Weight : n/a	Surface Area : n/a m <sup>2</sup>			
All Dimensions In mm					Scale: Do Not Scale	 Third Angle Projection		Kingspan Environmental reserve the right to alter the details of this drawing without prior notice. This drawing is copyright and may not be reproduced or used without the written permission of Kingspan Environmental	
R:\Drawing Data\02 - Sales Drawings\DS\DS - 08\DS0852P W1 080-W1 120 Washdown & Silt							