

AquaCube

From Direct Pumps and Tanks



Table of Contents

Product Description.....	2
Product Application.....	2
Product Location.....	3
AquaCube Services.....	3
AquaCube Features.....	4
AquaProf Pump Overview.....	5
Technical Drawings.....	6
Curves and Specification.....	8
AquaCube Renderings.....	9



PRODUCT DESCRIPTION

The AquaCube has been designed to provide a self-contained, pre-assembled rainwater harvesting system that comes in two different sizes, 3375 litres and 4500 litres with larger options available upon request. The AquaCube can be installed as both a permanent installation or portable for use at different sites.

The AquaCube comes with all pumps, filters, and controls in one unit. This allows for a simple and straightforward installation with true 'plug and play' functionality.

Our AquaCube system can be used across various vertical markets and multiple building types. The system is perfectly suited for both new builds and existing retrofit sites.

PRODUCT APPLICATION

The AquaCube has been specifically designed to provide filtered rainwater for a variety of applications:

- ▶ Toilets and urinals
- ▶ Laundry
- ▶ Irrigation
- ▶ Vehicle and general cleaning





PRODUCT LOCATION

The AquaCube should be installed externally and within close proximity to your chosen building. Ideally the AquaCube should be close to all down pipes so that water from the roof area can be easily collected.

The AquaCube should be installed on a level concrete foundation which is capable of holding the full weight of the system when full with water.



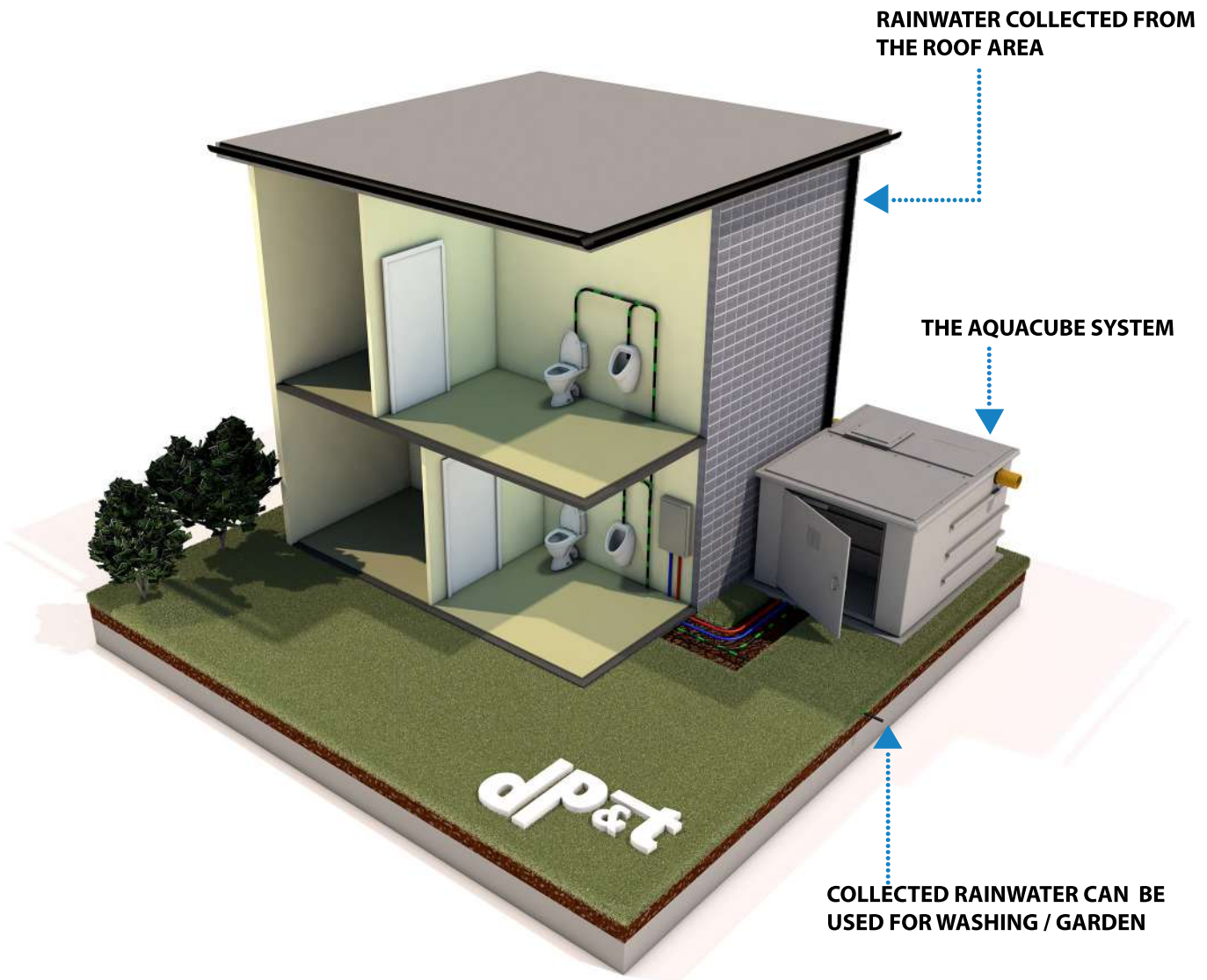
Ample room for different pump configurations

AQUACUBE SERVICES

The AquaCube system has been designed to supply direct, pressurised water to your installed appliances through the use of a single pump which is mounted away from the stored water container. The AquaCube will require the following services:

- ▶ Incoming rainwater supply from the roof
- ▶ The tank overflow should be fitted to a soak away or storm drain
- ▶ Mains electrical supply
- ▶ Mains water supply for system top-up in low rainfall periods.
- ▶ Pressurised rainwater from the system booster pump feed.
- ▶ Control unit emergency warning pipe should be fitted so overflows are visible

AquaCube Features at a Glance



Disclaimer: This diagram is to be used as a general overview of a typical rainwater harvesting system layout. It is not site specific and should not be relied upon for technical submittal or guidance.



AquaProf Features

- ▶ Equipped with anti-odour siphon
- ▶ Auto checking of valves every 24 hours
- ▶ Auto changing of water every week
- ▶ Wall mount bracket
- ▶ Water level sensor with 20m cable
- ▶ Rainwater is used as priority over mains
- ▶ Pressure and flow control
- ▶ Full "Start-Stop" system
- ▶ LCD panel with fault reporting

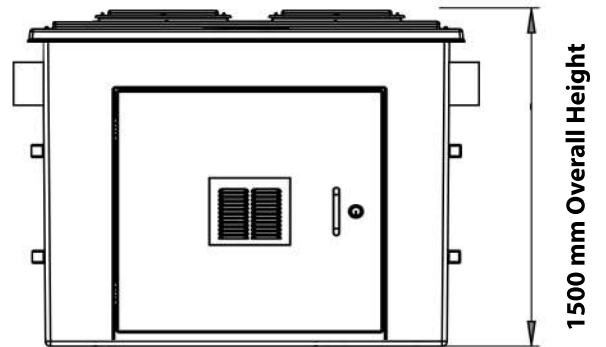
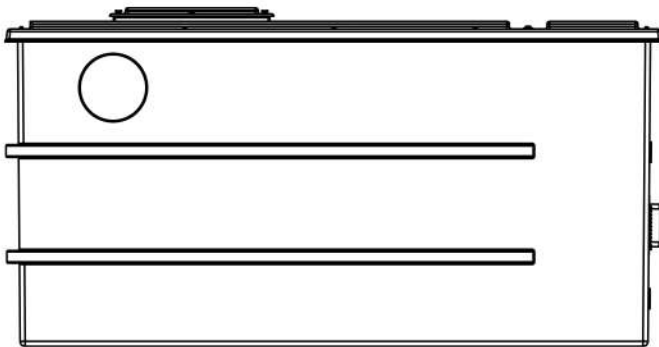
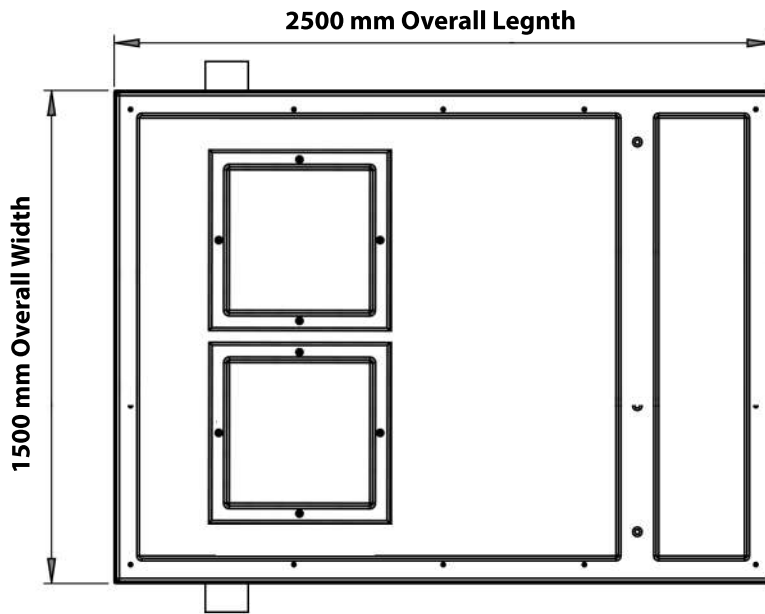
The Power Behind the System.

The AquaProf Basic 40/50 system from Direct Pumps and Tanks is used for rainwater management and distribution. The AquaProf detects any faults in the water collection system, whether from rainwater or the mains and makes automatic corrections to ensure continued operation of the system to ensure no connected utilities are left dry. It signals any faults and displays the problem detected on an easy to read LCD screen.

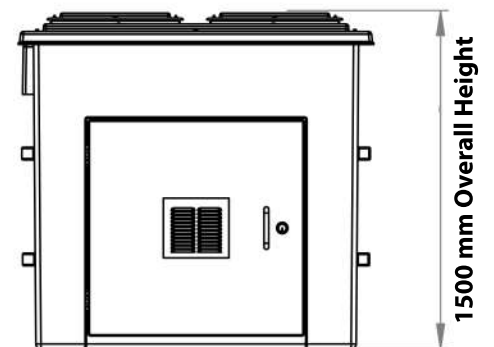
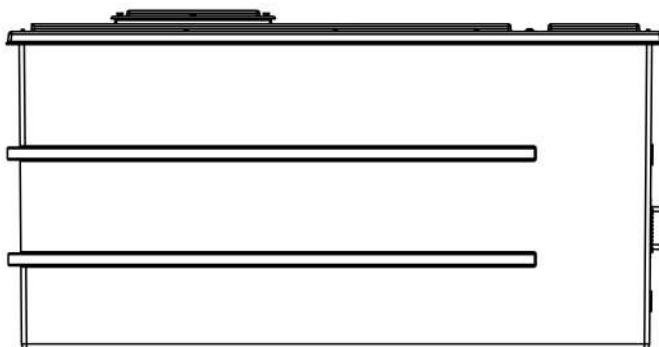
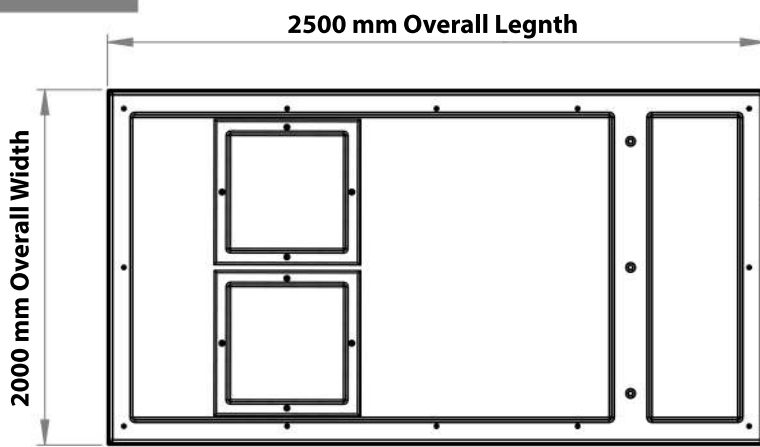
- ▶ Liquid temperature range from +5°C to +35°C
- ▶ Max. system pressure: Max 6 bar
- ▶ Max . mains pressure: Max 4 bar
- ▶ Minimum mains flow rate: Min 10 ltr/min
- ▶ Maximum height of highest use: 12 m
- ▶ Power supply: Volt 230 Hz50
- ▶ Maximum power absorbed: W 1000
- ▶ Protection rating IP42
- ▶ Ambient temperature: Min 5°C Max 40°C
- ▶ Tank materials GRP
- ▶ Mains inlet pipe dimensions: 3/4"
- ▶ Discharge pipe dimensions: 1"
- ▶ Suction pipe dimensions: 1"
- ▶ Overflow pipe dimensions: DN 50
- ▶ Max altitude: 1000 meters
- ▶ Max power pump No. 2 relay: 3'A_250Volt
- ▶ Water type: ph 4-9
- ▶ ON/OFF float version: ON/OFF float with 20 meter cable



**3375 LITRES TANK
TECHNICAL DIMENSIONS**



**4500 LITRES TANK
TECHNICAL DIMENSIONS**

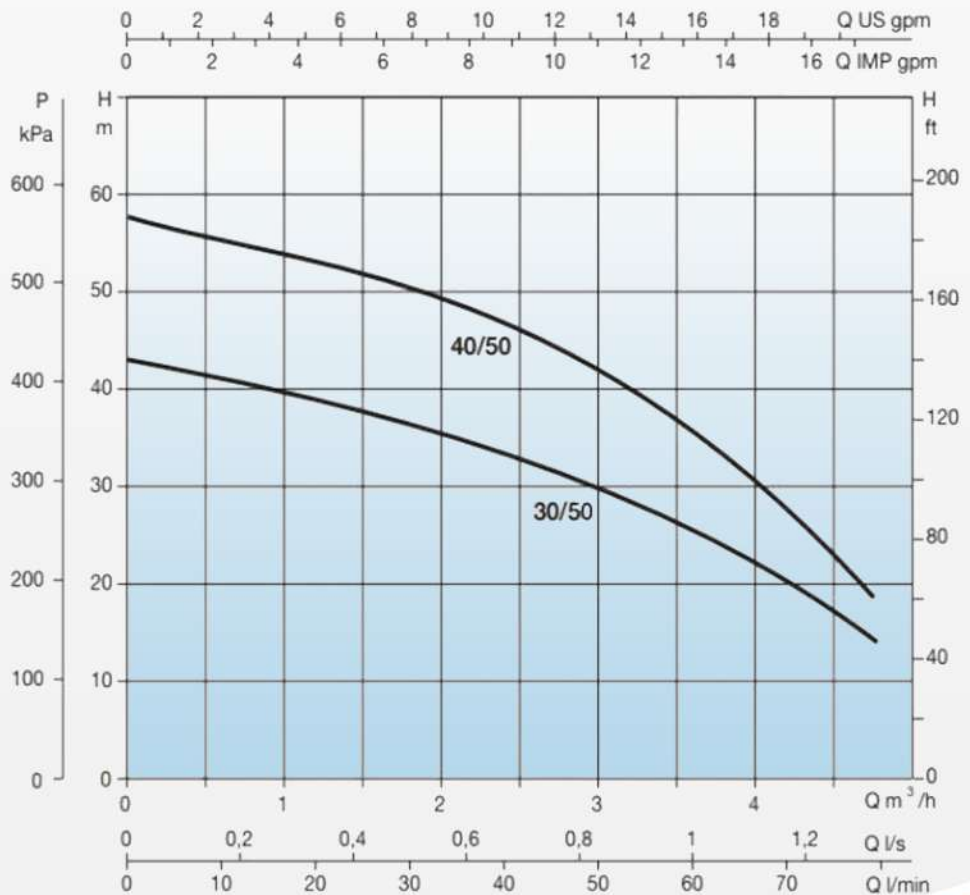




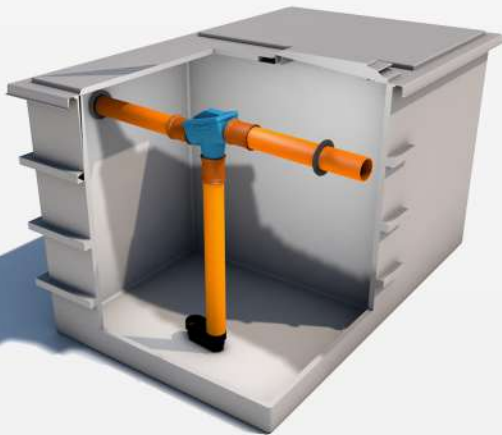
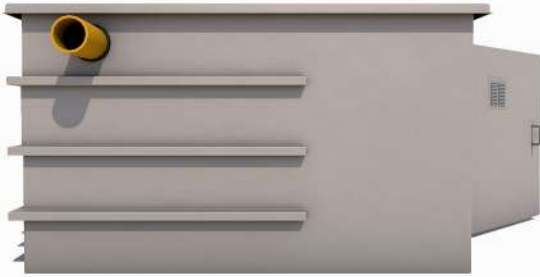
AQUACUBE TECHNICAL INFORMATION

CAPACITY	3375	4500L
Dimensions (mm)	1500 H x 1500W x 2500 L	1500 H x 2000 W x 2500 L
Weight (kg)	375Kg	525Kg
Colour	Light Grey	Light Grey
Rainwater inlet size	110mm	110mm
Rainwater overflow size	110mm	110mm
Pump discharge	1"	1"
Power	0.55kW / 3.9A	0.55kW / 3.9A
Voltage	220 -240v	220 -240v
Pump type	AquaProf 40/50	AquaProf 40/50

AQUACUBE PUMP CURVE EXAMPLE



AQUACUBE RENDERINGS



view of integrated Patronen filter.



Direct Pumps and Tanks Ltd
Unit 12 Cossall Industrial Estate
Ilkeston
Derbyshire
DE7 5UA
Tel: 0115 9444474
Fax: 0115 9442040
Email: info@dpandt.co.uk